



69th Edition

Sarasota-Manatee County Traffic Incident Management Team

November 2016



INSIDE THIS ISSUE:

- National TIM Training Certificate** 1
- National Traffic Incident Response Week Raises Awareness For Protecting First Responders** 1
- First Responders Protect and Serve Throughout The Holiday Season** 2

Upcoming Events:

Next TIM Team Meeting:

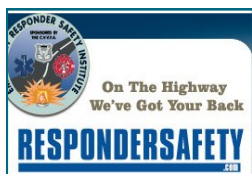
Manatee County Public Safety Center 2101 47th Terrace East
Bradenton Florida, 34203

1:30 PM

- **December 13, 2016**



National TIM Training Certificate



Through a special agreement with the Federal Highway Administration, the Responder Safety Learning Network (RSLN) offers a National TIM Training Certificate for registered users who complete ten specific RSLN online self-paced programs.

To earn credit for each program, you must view the program in its entirety and pass the Skills Challenge test. Once you earn credit for all ten programs, you will be able to download a special certificate that is the equivalent of completing the National Traffic Incident Management Responder Training Program.

The ten RSLN programs required for the National TIM Training Certificate are:

- Advanced Warning
- Blocking Procedures at Roadway Incidents
- High Visibility Innovations
- Manual on Uniform Traffic Control Devices (MUTCD)
- Move It or Work It
- See and Be Seen: Emergency Lighting Awareness
- Special Circumstances: Safe Operations for Vehicle Fires
- Special Hazards
- Termination Phase of an Incident
- Traffic Incident Management: Incident Command & Management

To learn more about the National TIM Training Certificate, please visit <http://www.respondersafety.com> which is a free learning website for first responders.

National Traffic Incident Response Week Raises Awareness For Protecting First Responders



The first National Traffic Incident Awareness Week is taking place November 13-18. The week was designated by the Federal Highway Administration, with administration and support from the TIM Network.

Traffic Incident Response Week is a time to recognize emergency responders and their tireless effort to help

save lives at the scenes of traffic incidents across the country. Every year hundreds of emergency responders representing fire, law enforcement, emergency medical services, towing, and transportation agencies lose their lives while responding to incidents.

From 2014 to 2015, there was an increase of 3.2 percent in the total vehicle miles traveled in the United States, the largest increase since 1992. With more miles traveled, the total number of police-reported traffic crashes increased by 3.8 percent during this

time period. Additionally, the 7.2-percent increase in incident fatalities is the largest percentage increase in nearly 50 years. With an increasing

number of incidents requiring emergency response, it is imperative that we work together to ensure that our emergency responders are able

to do their jobs safely, so we do not continue to add to the number of injuries or fatalities.

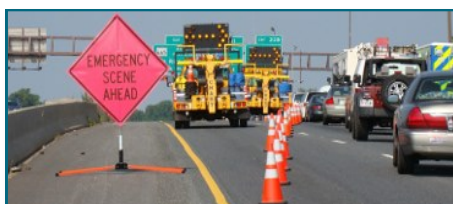
There are steps motorists can take to help keep first responders safe.

- Slow down and move over when passing an incident scene to provide a protective buffer for responders and the motorists behind you.
- If you can steer it, clear it. Many drivers think they should not move their car if they are involved in a fender-bender or crash. If (and only if) your car is drivable and there are no injuries, you should move your car to the shoulder or nearby safe place off of the road.
- Know your state's laws about what to do in a traffic incident.

The week is also a reminder among TIM professionals on the importance of being careful on the highways.

Remember ***"The Best Safety Tool You Can Have Is Your Local TIM Team."***

To learn more about the event, please visit the TIM Network at: <http://timnetwork.org/traffic-incident-response-awareness-week/>



First Responders Protect and Serve Throughout The Holiday Season

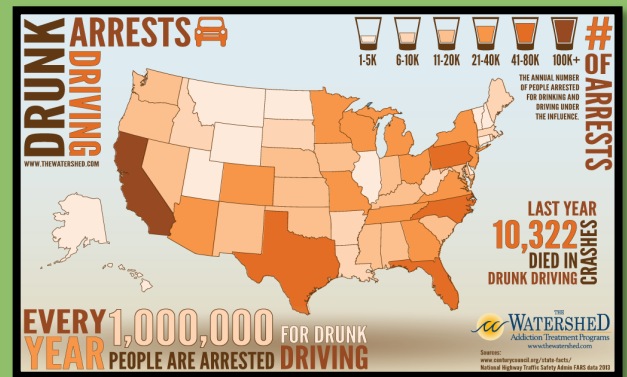


Law enforcement officers are our best allies in the effort to reduce drunk driving and are the heroes who make our roads safe. The holidays are known for being merry and bright, but they're also known for being the deadliest season when it comes to drunk driving. Every holiday season, lives are lost due to drunk drivers.

How big is the problem? Latest data from the National Highway Traffic Safety Administration (NHTSA) indicates that the 10,265 alcohol-impaired fatalities in 2015 accounted for about one out of three highway deaths (29 percent) on U.S. roads. There were 9,943 such fatalities in 2014.¹

Strategies to Reduce or Prevent Drunk Driving:

- **Drunk driving laws** make it illegal nationwide to drive with a BAC at or above 0.08%. For people under 21, "zero tolerance" laws make it illegal to drive with any measurable amount of alcohol in their system.
- **Sobriety checkpoints** allow police to briefly stop vehicles at specific, highly visible locations to see if the driver is impaired.
- **Ignition interlocks installed** in cars measure alcohol on the driver's breath. Interlocks keep the car from starting if the driver has a BAC above a certain level, usually 0.02%. They're used for people convicted of drunk driving and are highly effective at preventing repeat offenses while installed.
- **Multi-component interventions** combine several programs or policies to prevent drunk driving. The key to these comprehensive efforts is community mobilization by involving coalitions or task forces in design and implementation.
- **Mass media campaigns** spread messages about the physical dangers and legal consequences of drunk driving. They persuade people not to drink and drive and encourage them to keep other drivers from doing so. Campaigns are most effective when supporting other impaired driving prevention strategies.
- **Administrative license revocation or suspension laws** allow police to take away the license of a driver who tests at or above the legal BAC limit or who refuses testing. States decide how long to suspend the license; a minimum of 90 days is effective.
- **Alcohol screening and brief interventions** take advantage of "teachable moments" to identify people at risk for alcohol problems and get them treatment as needed. This combined strategy, which can be delivered in health care, university, and other settings, helps change behavior and reduces alcohol-impaired crashes and injuries.
- **School-based instructional programs** are effective at teaching teens not to ride with drunk drivers. More evidence is needed to see if these programs can also reduce drunk driving and related crashes.²



To help ensure everyone's safety, the Florida Highway Patrol will be out in force on the highways during the holidays to provide assistance to motorists, as well as to get impaired drivers off the road. If you see someone driving who you think might be impaired, call *FHP (*347) on your cell phone.

To learn more and to download media marketing materials to share with your agency, please visit: <https://www.nhtsa.gov/Driving-Safety/Impaired-Driving>

(1) Driving Safety. National Highway Traffic Safety Administration. November 2016: <https://www.nhtsa.gov/Driving-Safety/Impaired-Driving>

(2) Impaired Driving: Get the Facts. Center for Disease Control and Prevention. August 2016 Web. http://www.cdc.gov/motorvehiclesafety/impaired_driving/impaired_drv_factsheet.html

Article Submitted by Metric Engineering, Inc. – Brandy Boccuti

T I M TEAM WEBSITE!

www.swfilitim.org

The Sarasota-Manatee County TIM Team is committed to implementing the Quick Clearance principles of Florida's Open Roads Policy through the "3 Cs" of TIM: Communication, Cooperation and Coordination, and providing the public with the best real-time Motorist Information available. Team membership draws from state, regional, and local transportation agencies, public safety providers, and other organizations and companies that service the traveling public. The Teams, sponsored by the FDOT, meet bi-monthly.

Mission

The TIM Team Program brings together all agencies involved in clearing the roadway crashes with the objective of improving detection, verification, response, and clearance times to expeditiously remove a motor vehicle crash or incident from the roadway while providing the best real-time information to motorists, resulting in a safer highway environment for both incident responders and motorists

